

# ***SonTiy***

· SONTIY SANITARY WARE INDUSTRIAL CO.,LTD ·



**BETTER WATER FLOWS**  
**BETTER LIFE WILL BE**

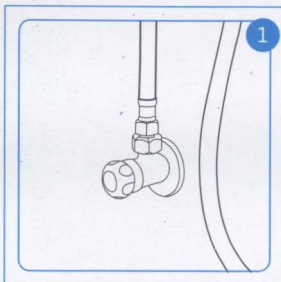
# Installation Instructions

## ★Product Description:

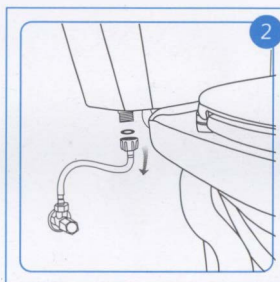
This handheld toilet sprayer is made of high strength, impact resistant, corrosion resistant brass and comes with a T-adaptor valve to prevent any leaks. Simple thumb pressure controls increase the spray pressure from a soothing and gentle rinse to a full pressure jet spray. Designed for toilet spraying, the water pressure of this product can be adjusted to suit your needs, providing unlimited help flushing and spraying. This handheld sprayer can also be used for baby diaper cleaning, shattaf/muslim shower, spray cleaning, etc. The sprayer's multifunctional use will help you overcome any cleaning obstacles you may encounter in your daily routine. Thank you for choosing SonTiy!

## ★Step-by-step Installation Guide:

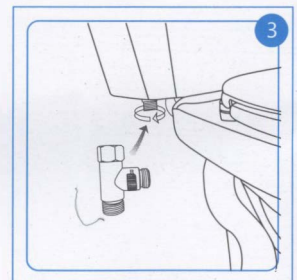
1.First, turn OFF the water supply valve. Once off, flush your toilet to remove any remaining water.



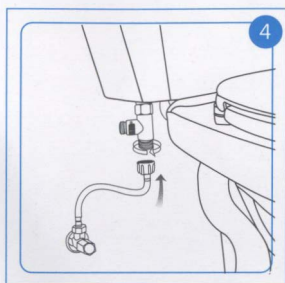
2.Disconnect the toilet hose from the flush tank. You can use scotch tape to keep the seal ring attached to the hose as you will want to prevent the rubber washer from falling.



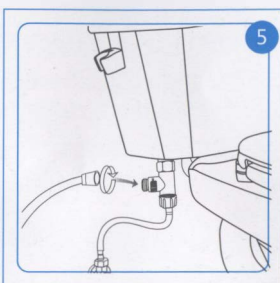
3.Connect the T-adaptor valve to the flush tank. Hand tighten the T-adaptor valve to the flush tank.



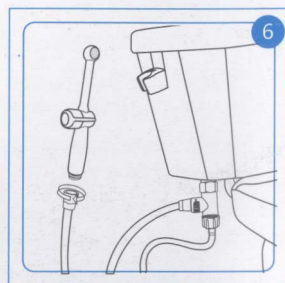
4. Connect the T-adapter valve to the toilet hose. Hand tighten the connection between the hose and the T-adapter valve.



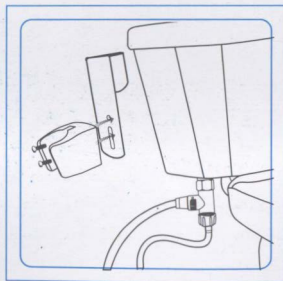
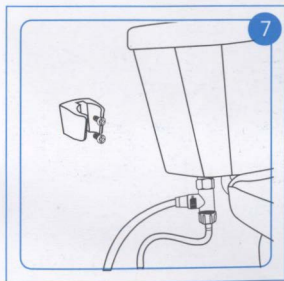
5. Connect the shower hose to the T-adapter valve. You should also check that the shower hose seal ring is in place. Tighten the connection between the shower hose and the T-adapter valve to the proper torque.



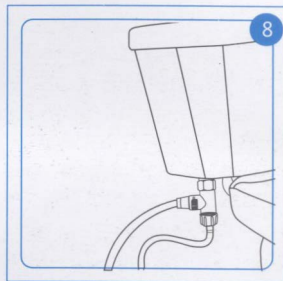
6. Connect the other end of shower hose to the handheld bidet sprayer head. Please be sure to check that the seal ring is safely in place before hand tightening the connection again.



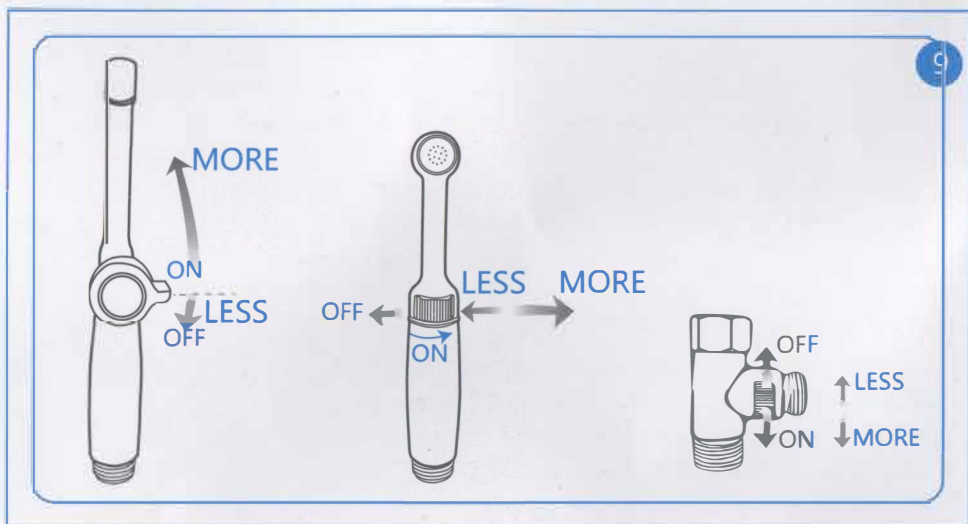
7. There are two options for mounting the sprayer: toilet tank mount and the wall mount. To mount on the toilet tank, open the tank lid, hang the sprayer mount on the toilet with our accessory hook, and hang the bidet sprayer on the hook so it is convenient to use. If you don't want to hang the sprayer mount on the toilet tank, you can install the wall hanger on the wall with the screw kit we provide.



8. Turn your water supply valve back on and check for any leaks from the hose connections. If you detect a leak, turn OFF the water supply valve and check that your connections are properly tightened and that the seal ring is in place at every connection point.



9. After ensuring there is no leakage, you can start using our product. You only need to move the switch gently to reach the required water pressure. There are two models of our bidet sprayer: 6.8" spray stick and 7.9" spray stick. Note that the two bidet sprayers are used in different ways. (For the 6.8" bidet sprayer, you need to move the switch from left to right to reach the required water pressure. For the 7.9" bidet sprayer, you need to move the switch up and down.)



10. Please note that if you feel that the water pressure is too high or too low, you can adjust the water pressure to the strength you want by adjusting the switch at the T-adaptor and the sprayer at the same time.

## ★Installation Notes:

1. Please always check each seal ring is in place during installation.
2. Before tightening the hose-valve connection, make sure to put the seal ring in the T-adaptor and shower hose, otherwise it may leak. If there are still gaps and leaks on the interface, please place 2 seals.
3. Hand tighten all connections to keep the seal ring in functional shape and in order to prevent leakage.

- 4.You can adjust the water pressure to the level you want via the switch. Just gently move it left or right to the water pressure you want. When you open the knob to the 1/3 or 1/2 position, and you still feel the water pressure is too strong, you can operate the knob of the T-adapter and the switch of the hand held bidet sprayer to adjust the water pressure to the level you want.
- 5.Turn off the T-adapter valve if you will be out of the house for an extended period.
- 6.Be sure to install the wall bracket in the correct orientation. Otherwise the bidet sprayer may not be able to stay on the bracket in the right direction.
- 7.The T-adapter is 1/2 screw thread. The package includes the 15/16" screw thread connectors only. If needed, a 9/16 screw thread connector must be bought separately at your local hardware store.
- 8.These instructions are for the installation purpose of our product only and the product style you purchased from website may not be the same as the one shown in the instruction diagrams.
- 9.Do not use tape while installing the connectors. If tape is applied, the spiral shape of the product will not fit, which may cause water leakage.

## ★Maintenance Considerations:

- 1.When using the bidet sprayer, please handle it lightly and with care so as not to damage the sprayer. Do not allow hard utensils or rough fabrics to come in contact with the sprayer, nor knock it against hard objects.
- 2.Regularly clean off any dirt from the sprayer with a detergent. If the sprayer remains dirty, use a towel to wipe and then dry the surface with a clean towel. Avoid contact with acid and alkaline chemicals so as not to affect the quality of the surface and the product life.
- 3.After long term use, the nozzle can be affected by impurities in the water and the nozzle may become clogged. You can use a small fine needle to clear the dirt from the nozzle. This will solve any clogging problem.
- 4.Keep the sewer outlet open to prevent siltation caused by debris.

## ★Package Includes:

- 1.Solid brass handheld sprayer
- 2.Solid brass T-adapter valve
- 3.Shower hose
- 4.Wall bracket
- 5.Toilet hook
- 6.Screw kit (wall-mounted screw kit and toilet hook screw kit)

## ★Bidet Sprayer Premium Features:

- 1.The SonTiy handheld bidet sprayer is professionally designed and constructed to withstand high water pressure and provide a leak free, splatter free, blasting free user experience. It also features a 90° adjustable pressure control knob for easy, effective, and fresh rinse or jet spray.
- 2.The unique streamline design of SonTiy provides the perfect angle for targeted cleaning. By turning the control knob to the 1/3 position, you will get ideal water flow for personal hygiene; turning the knob to the maximum position provides a stronger water flow that is well suited to rinse and cleaning jobs.
- 3.The bidet sprayer wand has two lengths: 6.8" (type 71901) and 7.9" (type 71905) for you to use in front or behind easily. Gently adjust the control knob to choose a suitable water pressure for yourself: high-pressure or soft-pressure.
- 4.The handheld bidet sprayer is constructed from high strength, impact resistant, corrosion free solid brass. The complex ceramic disc seals are safe and high pressure resistant.
- 5.The SonTiy handheld sprayer features an ergonomically designed T-adaptor valve which controls the flow and water pressure of the sprayer, therefore allowing the sprayer and toilet bowl to be used simultaneously.
- 6.The T-adaptor valve has a solid brass valve body and features 7/8-inch thread nut, which is more durable than the plastic T-valve of competitors' products. The installation process is simple and requires no special tools.
- 7.Dual functional T-valve: the on-off function prevents underage children from turning on the sprayer by accident. Additionally, the water pressure control function offers flexibility to adjust the water flow.
- 8.The solid and durable valve body and hexagon nut are perfect replacements for the traditional plastic T-valve. When you install the SonTiy bidet sprayer you will appreciate its satin chrome finish, smooth and reliable operation. Our top-quality product will serve you for a long time into the future.
- 9.59" polished 304 stainless steel hose: our hoses are specially crafted for use with a handheld bidet sprayer and designed to maintain a certain water strength under pressure. When installed correctly, they do not easily leak water and can withstand significant pressure. The internal super-strong polymer hose is infused with braided nylon. The net does not swell or rupture under pressure. In addition, our hoses are well suited for the water pressure common in the United States. They can withstand more than 50 kg of water pressure and can continuously withstand water pressure of up to 25 kg for a long time.
- 10.Our product is a perfect replacement for paper towels and toilet paper! You will save on paper product costs. The sprayer's multifunction use will undoubtedly make your life more hygienic and convenient.



## ★Warranty information:

- 1.SonTiy products are made of superior materials and undergo strict quality inspection. Once you purchase the SonTiy bidet sprayer, SonTiy provides a 3-month unsecured money-back guarantee. Additionally, if there are any problems with the product within the first three years, the company will provide a free replacement to restore the product. Whenever possible, the company will send a replacement product of the same model, although the company reserves the right to send a different replacement model. If you need a replacement but your product is out of warranty or you require a replacement due to non-product problems, the company will charge a partial replacement fee.
- 2.This warranty does not apply to product damage caused by misuse, abuse, accident, intentional damage, improper installation, improper care or maintenance, or other human factors.
- 3.If you need a repair, please provide your order number, or provide credentials of purchase (product manual), otherwise you will not be able to enjoy the free repair services provided by our company.
- 4.This product manual and warranty must be stamped with the dealer's seal before purchase.
- 5.SonTiy reserves the right to change the terms and conditions of the warranty without prior notice. In the case of any disputes, SonTiy reserves the right of final interpretation.

## ★Contact Us:

- 1.If you have any issues with our product, please feel free to contact us by email at [sontiy@163.com](mailto:sontiy@163.com) or call us at +86-0750-2709166!
- 2.In accordance with customer privacy policies and regulations, we do not keep information on buyers, even if they purchased a product online.
- 3.If you have any problem with your product, please contact us. Be sure to include your ORDER ID with your message. Most messages receive a reply within 8 hours and we will continue to work with you until you receive a satisfactory response.
- 4.If you have any thoughts or comments on the product or improvement ideas on our company's products, we welcome your feedback. You can contact us on Facebook at [sontiy.official@gmail.com](mailto:sontiy.official@gmail.com). We will share relevant new products and some preferential products on Facebook ,we look forward to your interaction with us .

**Dear buyers ,**

Thank you very much for choosing SonTiy from among many sellers. We are very honored to have your business!

Prioritizing client experience, we will continue to provide you with high-quality products and strengthen our pre-sales and after-sales service system. We value your business and are working hard to provide better service and support on all our products.

We strive to ensure our clients' total satisfaction. If you receive the product and are dissatisfied for any reason, please contact us. We are confident our after-sales team will deal with your problem in a timely manner and work with you until you are satisfied. If you have any feedback or concerns, we welcome you to contact us and provide us with your valuable comments and suggestions.

If you are satisfied with our products and service, we invite and encourage you to leave a good feedback . Positive client feedback is the lifeblood of our business. We also invite you to introduce our bidet sprayer to your friends or colleagues. We love client referrals and expanding our product clientele.

Thank you for purchasing our bidet sprayer!

From  
SonTiy

**SonTiy**

**★ Company Details:**

SONTIY SANITARY WARE INDUSTRIAL CO., TLD

TEL: +86-0750-2709166 /2717966 FAX: +86-0750-2710908

ADD: No.31 ZiWei Road ShuiKou Town, Kaiping City,Guangdong Province ,China

WEBSITE: <http://www.sontiy.com> E-MAIL: [info@sontiy.com](mailto:info@sontiy.com)